

great for DUST CONTROL **CONTROL GLUE**

WHAT IS CONTROL GLUE

Control Glue is a self-cross-linking acrylic emulsion, used to bind and waterproof surfaces. Control Glue incorporates Nano Technology, giving a fine particle size to achieve excellent penetration into difficult substrates and performs well in highly filled systems. Control Glue offers medium flexibility with good binding and UV-resistant properties.

IMPORTANCE OF DUST SUPPRESSION

Dust suppression is important for water conservation through reduction of water truck movements, increased production efficiency, improved visibility during operations, reduced operator downtime, compliance to dust legislation and improved safety and health of workers and communities within the vicinity of mining operations.

Rapidly becoming more prominent is the effects of errant dust settling on installed solar panels and the impact thereof in energy generation of solar plants and the effects thereof in Clients' businesses.

Dust is a nuisance. Fugitive dust pollutes the air we breathe and contaminates our land and water resources. Dust is harmful to human health and safety, has a negative impact on the growth of plants, insects and animals both on land and in water. Dust can also have a negative effect on the economy of companies as excess exposure to it can result in productivity loss, sick leave and much more.



APPLICATION AREAS

- Exterior use – Construction Sites
- Road Surfaces
- Mine Tailings Storage Facilities (TSF's)

PRODUCT FEATURES

- Waterproof
- Excellent penetration
- Medium flexibility
- Good UV-resistance
- Nano Technology • Self-cross-linking to capture and bind errant dust particles

PRODUCT BENEFITS

- Fuel saving
- Odorless
- Reduce tyre-wear
- Increased personal safety
- Increased energy generation of solar installations adjacent to dirt roads
- Lower cost – less frequent maintenance applications
- Less water usage – decreased by up to 95%
- Non-hazardous, non-dangerous goods



TECHNICAL DATA

PHYSICAL FORM:	Self cross-linking Acrylic Emulsion
PACKAGING:	1000L Flow Bins / Bulk Tankers
APPEARANCE:	Milky white emulsion
MIXING:	Always stir well before use with a at paddle
APPLICATION METHOD:	Water Bower truck / trailer with spray bar and spray lance
SOLIDS:	(±1%): 35 - 47%
VISCOSITY:	¹ mPa's: 4500 ±1500
PH:	7.5 - 8.5
MFFP:	(C): 6
DENSITY:	g/cm ³ : 1.03 (1000ℓ = 1030)
ACTIVE INGREDIENT:	Emulsion Styrene / Acrylic co-Polymer
CHEMICAL NAME:	Emulsion Styrene / Acrylic co-Polymer
SYNONYMS:	Emulsion Styrene / Acrylic Latex
CHEMICAL FAMILY	Styrene / Acrylic Latex
DRYING TIME:	± 3 hours
FLASHPOINT:	Waterborne - Class 3 reproduct
THINNING:	Mix according to correct mixing ratio with tap water
EQUIPMENT CLEANING:	Clean equipment with water
TEMPERATURE:	Do not apply to surfaces below 5°C



ECO-FRIENDLY
SOLUTION



PLEASE
RECYCLE

Delivered in 1'000L Flow Bins or
30'000L Bulk Tankers



COST- EFFECTIVE



ENHANCED SAFETY



ALL WEATHER PERFORMANCE

THINNING FOR VARIOUS INITIAL APPLICATIONS

Thinning for New Road Construction Initial Application:

Mix 1 part Control Glue to 2 parts tap water

Thinning for Existing Roads Initial Application:

Mix 1 part Control Glue to 9 parts tap water

Thinning for Mining TSF Initial Application:

Mix 1 part Control Glue to 9 parts tap water

THINNING FOR VARIOUS MAINTENANCE APPLICATIONS

Thinning for Newly Constructed Roads Maintenance Applications:

Mix 1 part Control Glue concentrated to 9 parts tap water

Thinning for Existing Roads Maintenance Applications:

Mix 1 part Control Glue concentrated to 15 parts tap water

Thinning for Mining TSF Maintenance Application:

Mix 1 part Control Glue concentrated to 9 parts tap water

PRACTICAL COVERAGE & APPLICATION FREQUENCY FOR VARIOUS APPLICATIONS

PRACTICAL COVERAGE RATE: INITIAL APPLICATION (2 COATS APPLIED)

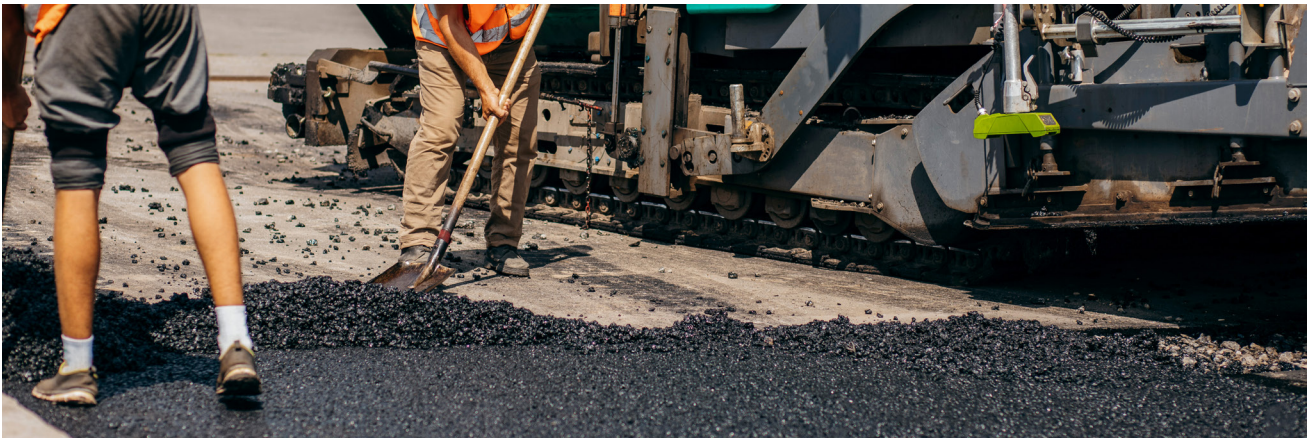
NEW ROAD CONSTRUCTION:	Mixed 1:2 with water = 3m ²
EXISTING ROAD:	Mixed 1:9 with water = 20m ²
MINE TSF:	Mixed 1:9 with water = 10m ²

PRACTICAL COVERAGE RATE: MAINTENANCE APPLICATION AND FREQUENCY (2 COATS APPLIED)

NEWLY CONSTRUCTED ROAD:	Mixed 1:9 with water = 20m ² every 2 weeks for 3 months, thereafter once per month
EXISTING ROAD:	Mixed 1:15 with water = 32m ² once every 2 weeks for 2 months, thereafter once per month
MINE TSF:	Mixed 1:9 with water = 202 every 6 months

*Maintenance Applications may be adjusted according to Product performance catering to various traffic volumes and environmental factors. Inspections should be done regularly, and adjustments (if any) made to ensure optimal performance of Control Glue.

APPLICATION DETAILS



NEW ROAD CONSTRUCTION

- Rip the area 100mm deep (Initial Application only).
- Apply water until solid moist state (Initial Application only)
- Compact with roller (Initial Application only).
- Sweep the area free of loose dust and stone debris (Maintenance Applications only).
- Apply 1 coat of mixed Control Glue mixed correctly according to project requirement.
- Leave for 3 hours.
- Apply a second coat.
- Leave for 3 hours.
- Open/reopen road for use.

APPLICATION METHOD: EXISTING ROADS DUST SUPPRESSANT

- Sweep the area free of loose dust and stone debris.
- Damp-spray area with water.
- If the area is not compacted properly, apply water until a solid moist state.
- Compact with roller.
- Apply 1 coat of mixed Control Glue mixed correctly according to project requirement.
- Leave for 3 hours.
- Apply a second coat.
- Leave for 3 hours.
- Reopen road for use.



APPLICATION: MINING TSF DUST SUPPRESSANT

- Apply 1 coat mixed CONTROL GLUE mixed correctly according to project requirement
- Leave for 3 hours
- Apply second coat
- Can be used in conjunction with wind-break netting

SECONDARY PRODUCTS YOU MAY NEED

- Water Bowser Truck / Trailer with Spray Bar and Spray Lance for Roads
- Water Bowser Trailer with angled Spray Bar, Spray Lance and Mounted Diesel Pump for TSF's
- Mechanical Ride-on or Tow-behind broom
- Grader, Roller/Compactor (if necessary)
- Pumping Station to pre-mix Concentrate with Water, circulate Product and pump into Bowser / Application Trailer (for bigger projects)

HEALTH & SAFETY

- This product is non-hazardous according to EEC criteria
- Avoid contact with eyes, in case of contact with eyes wash out with water for atleast 5 minutes
- Contains no solvents – can be used with rotary pumps – to be cleaned thoroughly with water after use